

Lightsource Test Report

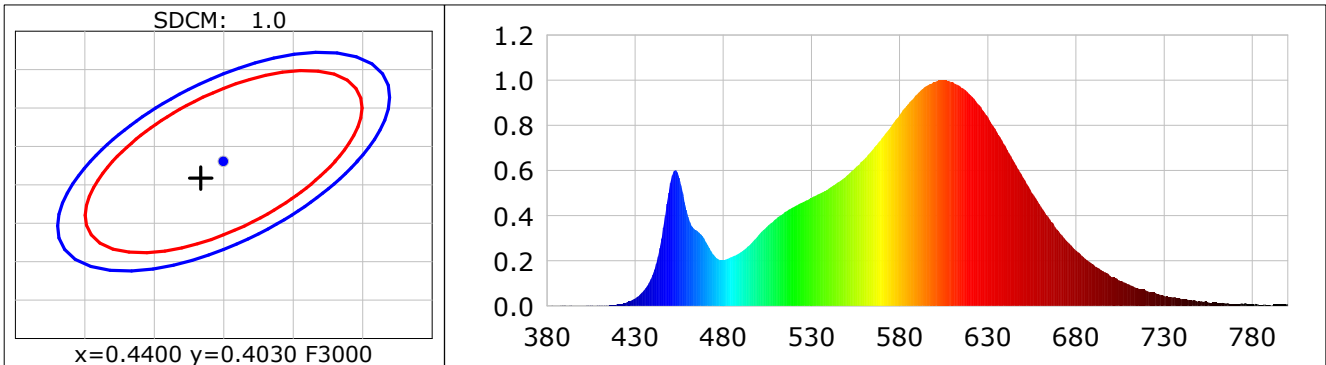
Product Information

Product Category: LED STRIP
 Product Spec: LYNX 7
 Manufacturer: TECSOLELED S.L.

Product Type: LED STRIP
 Product Number: 219
 Buyer: TECSOLELED S.L.

CIE Colorimetric Parameters

Chromaticity coordinates: $x=0.4384$ $y=0.4009$ $u(u')=0.2529$ $v=0.3469$ $v'=0.5203$
 CCT: $T_c=2950K$ ($duv=-0.00147$) Color Ratio: $R=0.235$ $G=0.737$ $B=0.027$
 Peak Wavelength: 605.1nm Half Bandwidth: 119.8nm
 Dominant Wavelength: 583.6nm Color Purity: 0.519
 CRI: $R_a=83.0$, $avgR(1\sim14)=78.0$, $avgR(1\sim15)=77.8$ TM30: $R_f=84$, $R_g=95$
 GAI: $GAI_BB_8=96.5$, $GAI_BB_15=104.7$, $GAI_EES=54.1$
 R1 =82 R2 =93 R3 =95 R4 =81 R5 =83 R6 =92 R7 =80 R8 =58
 R9 =8 R10=84 R11=81 R12=73 R13=85 R14=98 R15=74
 Color Quality Scale: $Q_a=82.7$, $Q_f=84.2$, $Q_p=84.2$, $Q_g=91.4$
 Q1 =78 Q2 =94 Q3 =84 Q4 =80 Q5 =83 Q6 =84 Q7 =84 Q8 =86
 Q9 =95 Q10=91 Q11=87 Q12=84 Q13=82 Q14=72 Q15=74



Photometric Parameters

Luminous Flux: 708.86 lm Efficiency: 143.46 lm/W Radiant Power: 2.143 W
 Total mains efficacy: 132.85 lm/W Energy Efficiency Class: E (EU 2019/2015)

Electric Parameters

Voltage: 24.000V Current: 0.2059A Power: 4.94W
 Power Factor: 1.0000 Frequency: 0.00Hz

Test Information

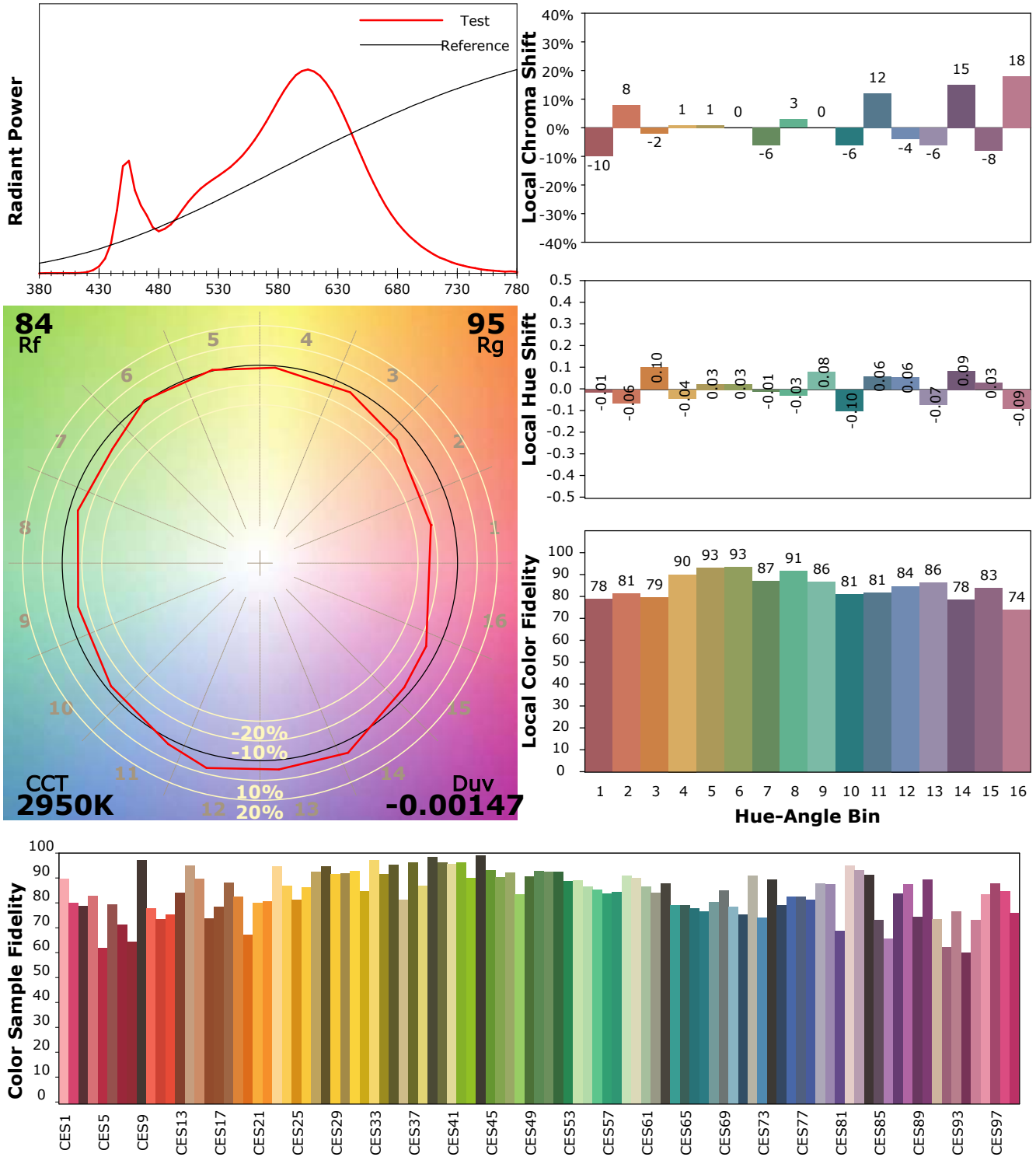
Scan Range: 380~800:1nm Photometric Method: sphere-spectroradiometer
 Stabilization Time: 0 Sec ALC.: 1.0000 Photometric Condition: Sphere diameter: 1.50m, 4PI
 Max of Signal: 46308 (2293) CCD Integration Time: 1005.35 ms

IES TM-30-18 Color Rendition Report

Product Information

Product Category: LED STRIP
 Product Spec: 21059602440507
 Manufacturer: TECSOLELED S.L.

Product Type: LED STRIP
 Product Number: 219
 Buyer: TECSOLELED S.L.



Condition: Tx:19.3°C, Ti:18.7°C, R.H.:60%
 Test Lab: TECSOLELED S.L.
 Operator: JORDAN GIL DIAZ

Test Device: Inventfine CMS-2S (Plus)
 Test Time: 2021-10-28 10:06:32
 Inspector: